

## Good Practices



Leave the garbage in containers



Walk on the marked trail



Respect private properties and goods



No animal captures are allowed



No fire is allowed



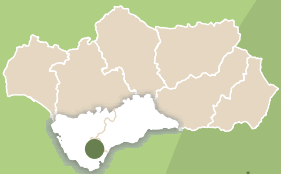
No fishing is allowed



No plant collection is allowed



Emergency Telephone: 112



CÁDIZ  
MÁLAGA

PARQUE NATURAL  
Los Alcornocales

## MORE INFORMATION

Los Alcornocales Natural Park

Pza. San Jorge n.º 1. 11180 Alcalá de los Gazules. Cádiz. T 956 41 86 01

Centro de Visitantes Cortes de la Frontera. Av. de la Democracia s/n  
Cortes de la Frontera. Málaga Telf 952 15 45 99

[www.ventanadelvisitante.es](http://www.ventanadelvisitante.es)

© / Dirección / Coordinación. Consejería de Medio Ambiente. Junta de Andalucía.  
Realización e imágenes: grupo entorno, Federación Andaluza de Montañismo, archivo CMA y Juanlu González.



UNIÓN EUROPEA

Fondos Feder



JUNTA DE ANDALUCÍA  
CONSEJERÍA DE MEDIO AMBIENTE

CÁDIZ-MÁLAGA



PARQUE NATURAL  
Los Alcornocales

# Path

## Río Hozgarganta



JUNTA DE ANDALUCÍA  
CONSEJERÍA DE MEDIO AMBIENTE

## COURSE

Lineal

## LENGTH

2,8 km

## ESTIMATE TIME

1 hrs

## DIFFICULTY

Low

## TRAIL

Trail with stones or rocky surface

## VEGETATION

Panoramic views to the valley, orchards and rests of ancient buildings (mills, artillery factory and water canal). Along the river bank, we can see oleander, eucalyptus, carob, cork and even gall oak trees.

## SHADOW

Low

## AUTHORIZATION REQUIRED

No

## RECOMMENDATIONS

Bring water, clothers and comfortable shoes. Please, visit the information office in Jimena de la Frontera, C/ Misericordia, Telf. number 673 314 780.

## PROVINCE / MUNICIPALITIES

Cádiz / Jimena de la Frontera

## SHEETS OF MTN 1:50.000

1071 - Jimena de la Frontera

## COORDINATES START / END

36° 26' 12,68"N – 5° 27' 18,20"W

36° 25' 42,50"N – 5° 27' 10,23"W



Reserva de la Biosfera



## HOW TO GET THERE

From Jimena, close to Rodete Mill, we can find the starter way. We head downhill towards the River Hozgarganta along the large canal to transport water to the Carlos III'S Royal Artillery Factory. Moving away from the river we link up with a woodland track which leads us uphill to a point on the way out to the village. The trail ends here. Alternatively, we could follow a track surrounded by small orchards from the river to the spring at La Encubierta. After refreshing ourselves there we could then enter the village, visit the Castle and enjoy the magnificent views.



## PARKING AREAS

In the Main Square: Plaza de la Constitución or close to the path.



## PUBLIC TRANSPORT

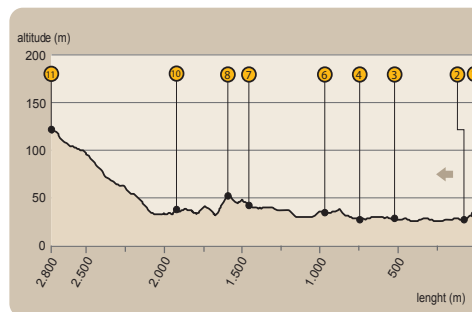
Transportes Comes: Tel. 902 19 92 08  
[www.tgcomes.es](http://www.tgcomes.es)



## OTHER TRAILS

+ Ubrique-Asomadillas Trail  
+ GR7, it goes from Tarifa to Andorra

## TRAVEL PROFILE



## MAXIMUM DIFFERENCE

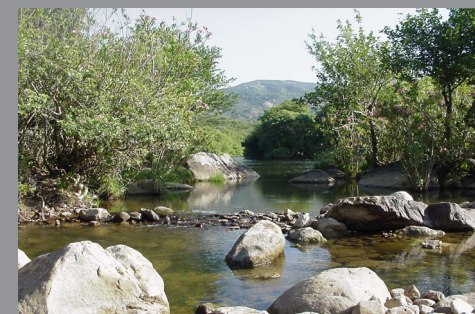
100 m

## MAXIMUM LEVEL

125 m

## MINIMUM LEVEL

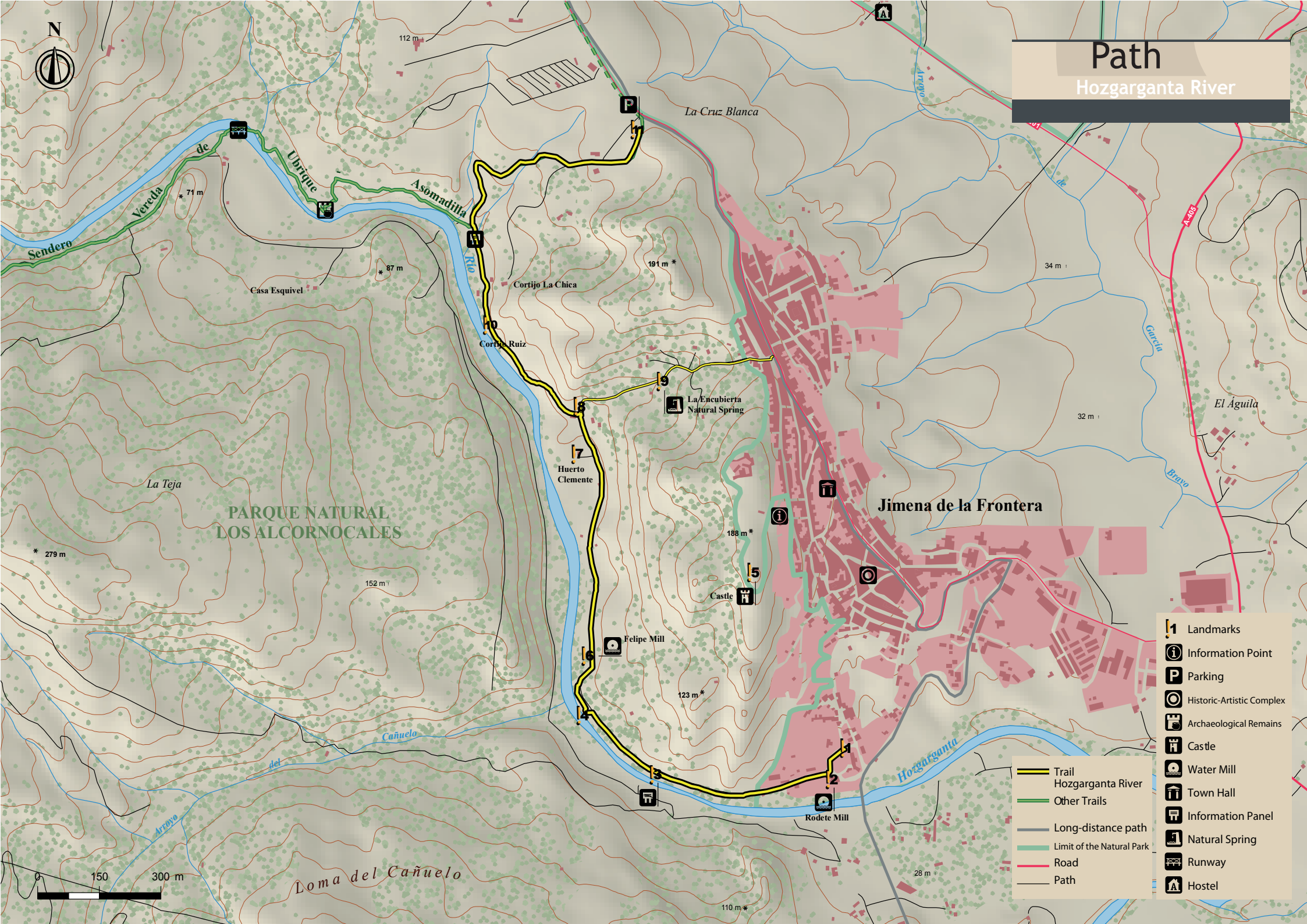
25 m





# Path

## Hozgarganta River



PARQUE NATURAL  
LOS ALCORNOCALES

Jimena de la Frontera

Loma del Cañuelo

- Landmarks
- Information Point
- Parking
- Historic-Artistic Complex
- Archaeological Remains
- Castle
- Water Mill
- Town Hall
- Information Panel
- Natural Spring
- Runway
- Hostel

- Trail
- Hozgarganta River
- Other Trails
- Long-distance path
- Limit of the Natural Park
- Road
- Path

